

LINCOLNSHIRE DRAINAGE BOARDS' MUSEUMS AND EVENTS

LINDSEY MARSH DRAINAGE BOARD

Telephone: 01507 328095

Anderby Drainage Museum

Anderby Creek, near Skegness, PE24 5XW.

The pumping station was built in 1945 and houses two Ruston 10HRC twin cylinder diesel engines driving Allen Gwynnes 42" centrifugal pumps capable of pumping 4,500 litres of water per second. The museum contains many interesting exhibits including old drainage tools, photographs and documents together with a collection of objects of archaeological interest.

Open 2.00 to 4.00 p.m. Sunday 26th July and 23rd August 2009.

Gayton Engine Pumping Station

Theddlethorpe, near Mablethorpe, LN12 1PE.

The building was built in 1850 to pump water from Gayton Fen and marsh into the River Great Eau. The original steam engines were replaced with diesel in 1945. The present pumping equipment comprises of a Peter "Atomic" 2-cylinder loop-scavenge 2-stroke ex-marine diesel engine, built in 1933, powering a 27" Gwynnes pump.

The pumping station is maintained by the Gayton Engine Preservation Society. For further information telephone the Chairman of the Society, Mr T.H. Heys on 01507 338667.

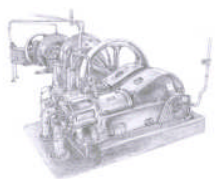


Open 2.00 to 4.00 p.m. Sunday, 5th July, 9th August and 20th September 2009.

Quinceys Pumping Station

Thorpe Culvert, near Skegness, PE24 4NJ.

Thorpe Culvert pumping station was built in 1938 and houses two Ruston and Hornsby 9XHRC diesel engines driving Gwynnes 36" centrifugal pumps each capable of delivering some 22,400 gallons of water per minute.



The station is run by a dedicated group of volunteers and is used to provide back up to the electric pumps in times of power failure.

Open 10.00 a.m. to 4.00 p.m. Sunday 27th September 2009. Visitors are also welcome to join the volunteers when they meet to undertake the maintenance of the pumps. For further information contact Mr A. Quincey on 01205 871021.

Historic Land Drainage Working Demonstration

White House Farm, Saltfleetby, near Louth, LN11 7SN.

A working demonstration using land drainage tools and techniques that would have been used on a small Lincolnshire farm in the 1950s. Visitors can watch drainage ditches being cleaned, clay pipes laid and many other operations. This three day event is open to local schools on the Thursday and Friday but the general public are welcome to visit on the Saturday.

Open 10.00 a.m. to 3.00 p.m. Saturday, 27th February 2010.



Painting by Robin Wheeldon

LINCOLNSHIRE DRAINAGE BOARDS' MUSEUMS AND EVENTS

WELLAND AND DEEPINGS INTERNAL DRAINAGE BOARD

Telephone: 01775 725861

Pinchbeck Museum

West Marsh Road, Pinchbeck Marsh, Spalding, PE11 3UW.



The pumping station was built in 1833 but ceased working in 1952. In 1988 the Board entered into partnership with the South Holland District Council to restore the steam engine and create a land drainage museum. The station houses a 20HP 'A' frame low pressure condensing beam engine with 18.5' diameter fly wheel and 22' diameter scoop wheel capable of moving 7,500 gallons per minute.

The museum is open daily from 10.00 a.m. to 4.00 p.m. from April until October.

WITHAM FOURTH DISTRICT INTERNAL DRAINAGE BOARD

Telephone: 01205 310088

Lade Bank Pumping Station

New Leake, Boston, PE22 8JF.



Lade Bank Pumping Station is a Grade 2 listed building, built in 1937 and still in use today.

As part of the Lincolnshire Heritage Open Days, the Board will be opening the station to the public from 12 noon to 4.00 p.m. on Saturday 12th September 2009.

The diesel engines will be running if water levels permit.

WITHAM THIRD DISTRICT INTERNAL DRAINAGE BOARD

Telephone: 01522 794479

Dogdyke Steam Pumping Station

near Bridge Farm, Tattershall, LN4 4JG.



The pumping station was built in 1856 to replace a wind-driven pump. The engine is the original external condensing beam-engine built by Bradley and Craven of Wakefield. This is probably the oldest steam-driven scoop wheel pumping set in the country which is still in steam in its original position.

In 1940 a new building was erected next to the steam pump to house a diesel driven pump. Although this has now been superseded by an electric pumping set, the station is maintained by the Board as a stand-by.

Both stations can be seen on open days when the engines are running.

The station is run by the Dogdyke Pumping Station Preservation Trust, telephone 01636 707642 for more information.

Open: 1.30 p.m. to 4.30 p.m. 12th April, 3rd May, 25th May, 7th June, 5th July, 2nd August, 6th September and 4th October 2009. Refreshments available.